

10670

BELMONT 36

MIN. BLOCK WIDTH - 13.0m



ROOM DIMENSIONS

GROUND FLOOR			
ALFRESCO	3600	X	3480
BED 4	3710	X	3200
DINING	3600	X	4950
GARAGE	6030	X	5770
KITCHEN	4590	X	4590
LIVING	4950	X	3840
FIRST STOREY			
BED 2	3200	X	3410
BED 3	3200	X	3410
MASTER SUITE	5600	X	4350
RUMPUS	5530	X	3200
WC	1000	X	1730

FLOOR AREAS

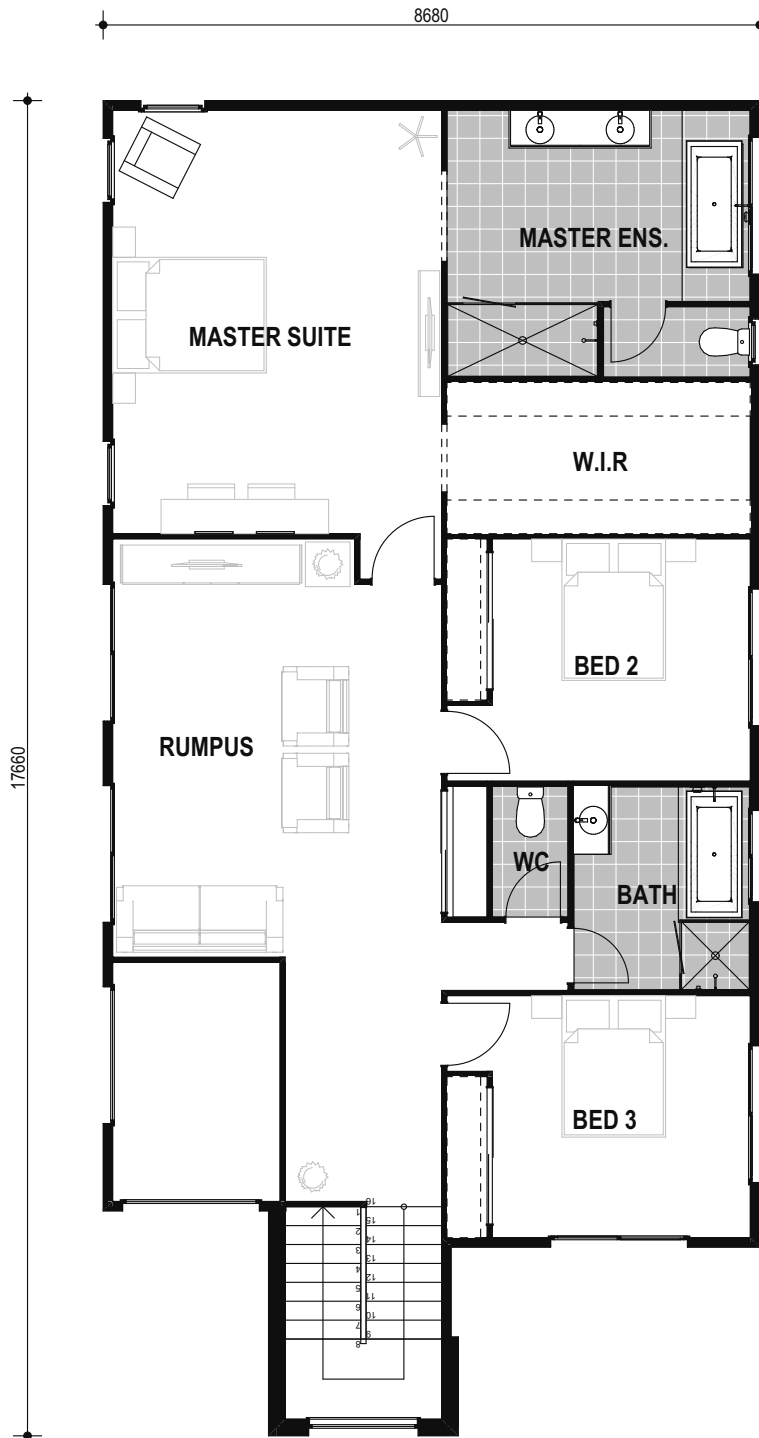
GROUND FLOOR		
	PORCH	6.57
	LIVING	138.06
	GARAGE	38.97
	ALFRESCO	12.53
		196.13 m²
FIRST STOREY		
	LIVING	136.78
		136.78 m²
	TOTAL	332.91 m²



**NEPTUNE
HOMES**

BELMONT 36

MIN. BLOCK WIDTH - 13.0m



ROOM DIMENSIONS

GROUND FLOOR			
ALFRESCO	3600	X	3480
BED 4	3710	X	3200
DINING	3600	X	4950
GARAGE	6030	X	5770
KITCHEN	4590	X	4590
LIVING	4950	X	3840
FIRST STOREY			
BED 2	3200	X	3410
BED 3	3200	X	3410
MASTER SUITE	5600	X	4350
RUMPUS	5530	X	3200
WC	1000	X	1730

FLOOR AREAS

GROUND FLOOR		
	PORCH	6.57
	LIVING	138.06
	GARAGE	38.97
	ALFRESCO	12.53
		196.13 m²
FIRST STOREY		
	LIVING	136.78
		136.78 m²
	TOTAL	332.91 m²



**NEPTUNE
HOMES**